

The background of the entire graphic is a photograph of a classroom. In the foreground, a young Black girl with her hair in braids is focused on writing in a notebook. Other students are visible in the background, some looking towards the camera and others looking down at their work. The lighting is bright and natural, suggesting a daytime classroom setting.

COMMITTED TO
E★cellence

Transition Presentation

Elementary to Middle School to High School

April 20, 2022

Meet Our Presenters



Stacie Zimmerman
Asst. Director of School
Counseling



Elizabeth Tanaka
Professional School
Counselor



Taheera Shelton
Professional School
Counselor



Jennifer Morovitz
Professional School
Counselor

Your child's team!!

The Student

Counselor

Teachers

Administrators

Case Managers

Parents





hello middle
SCHOOL

Elementary to Middle School

What is different at the Middle School campuses?

- Arrival time is 8:50am and Dismissal is 4:10pm
- Students do not line up for classes
- Bell schedule includes passing periods (5-7min)
- Tardies are counted after the first couple of days/weeks
- Dismissal is the bell and students walk outside
- No car Rider tags needed. Students need to be actively looking for family car at car rider area



Elementary to Middle School



What stays the same?

**Attendance
Grading Scale**

**Skyward
Schoolology**

Summer School Program



Elementary to Middle School

Lunch Time

Lunch seat is first come first serve

All 6th graders have the same lunch period

Snacks are sold for an additional cost

Lunch period is 30-35 min

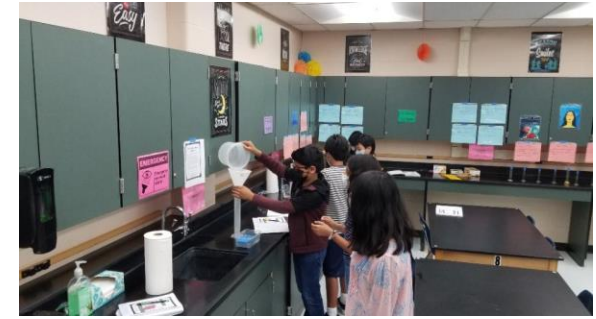
Parents are welcome to visit their child during lunch



Elementary to Middle School

• Middle School Courses

- Each student will have 7-8 courses (7-8 teachers with different expectations)
- No out-classes but students will have two electives (shared with 7th and 8th grade)
- Advisory period-used for SEL, intervention, announcements
- Resource classes are not pull-out, they are class periods for Math and ELA (ARD)
- Inclusion Course sections will have an additional teacher for support (ARD)
- Class periods are about 50-55 minutes
- STAAR Requirements include Reading, Math, Science (8th) and Social Studies (8th)
- PE is required and student will purchase uniform and combination lock
- Kickstart is an option for PE- limited seats
- Students must be in attendance a minimum of 90% of the days after enrollment in the course
- Morning Tutorials offered
- Naviance-College and Career Readiness Program
- No Tuesday folders-encourage to email teachers



Being Successful in Middle School

- Establish a homework routine with your student
- Practice good organizational skills
 - Use school issued planner
 - Encourage students to write down due dates for upcoming tests and assignments
 - Follow up and check for consistency.
- Consider a Family Wall Calendar as an added effort to keep up with tasks



Elementary to Middle School

COMMUNICATION



Being Successful in Middle School

- Communication is essential
- Read Campus Newsletters
 - These are typically emailed to parents as well as posted on the campus website
- Stay abreast of important events via campus website
- Email teachers and view their teacher webpage
- Talking Points (text message from teachers)

Being Successful in Middle School

Skyward

- Check student grades regularly
- Parents are able to personalize settings to receive alerts regarding missing or low grades
- Report Cards and progress reports are uploaded in Skyward under Portfolio

Tutorials

- Check with teachers to determine tutorial schedules
- Before or After school
- You don't have to fail to attend tutorials

Elementary to Middle School

A green rectangular road sign with white text that reads "High School". The sign is mounted on two metal poles and is tilted slightly upwards. The background is a clear blue sky with some light clouds.

High School

Next stop...

Middle School to High School

What is different at the High School campuses?

- Tardy bell is 7:30am and Dismissal is 2:45pm
- 7 or 8 periods in the day depending on campus
- Bell schedule includes passing periods (5 min)
- Tardy after 20 minutes is considered absent. 3 tardies equal one absence.
- Students may lose credit due to absences.
- Grade level is based on credits. No grade level promotion.
- Three lunch periods, A, B, C, decided based on 5th period course.
- Students served by last name alpha or grade level determined by campus.



Middle School to High School

What stays the same?



Attendance
Grading Scale

Skyward
Schoology

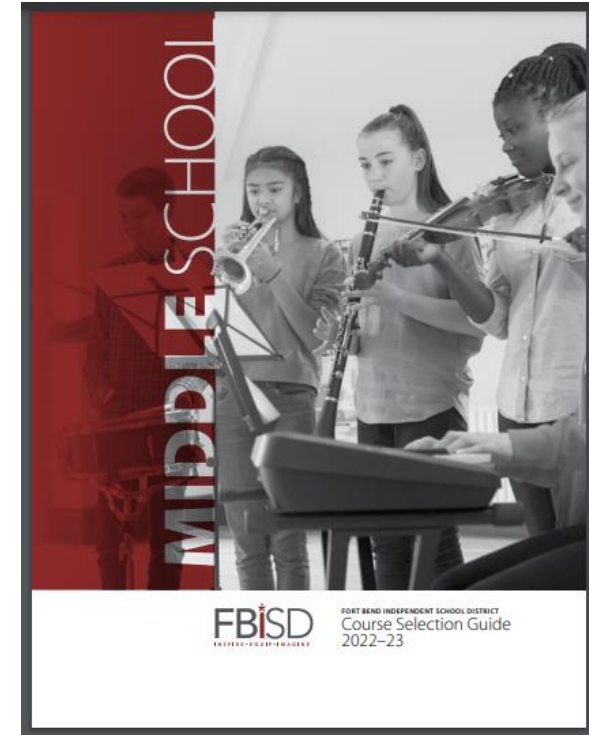
Summer School Program



Middle School to High School

Good to know:

- Get to know your case manager and counselor
- Know where to locate teacher contact info.
- Stay up to date on student progress.
- Get your student involved early in a sport, club, organization, etc.
- Attend freshmen summer camp
- Request to walk your schedule the week before school.



Locating the Course Selection Guide






 FORT BEND INDEPENDENT SCHOOL DISTRICT
 Course Selection Guide
 2022-23


<https://www.fortbendisd.com/courseselection>

HIGH SCHOOL COURSE SELECTION GUIDE


The *Fort Bend ISD High School Course Selection Guide* includes important information related to grades 9-12 including an overview of high school graduation requirements. Check out information on courses for each grade level, endorsement options, testing, special programs and planning for all four years of high school using the four-year planning guide included. Important contact information for several departments is also included on the last page.

Download the 2022-2023 High School Course Guide 

How to Create a Career Plan (4 year plan) in Skyward - 8th Grade Students 

How to Update Career Plan (4 year plan) in Skyward - 9th-11th Grade Students 

Graduation Requirements and Endorsement Information

Required Communication from TEA regarding Algebra II and Top 10% Automatic Admission 

High School Grade Levels

- Found in Course Guide, Page 118

Classification of Students

Grade level advancement for students in grades 9 through 12 shall be determined by the number of earned course credits according to the classification chart below.

Class Standing	Credits Required for Class Standings Minimum State Approved Units of Credit
Sophomore	6
Junior	12
Senior	18

- ✓ Credit for a class is earned if the student receives a grade of 70 or higher.
- ✓ A one- semester course (Speech/Health) is worth 0.5 credit. If a student fails a semester course, the student must retake the entire course to earn credit.
- ✓ A full-year course is worth 1.0 credit. If a student fails one semester of a multi-semester course, the student only retakes the semester that was failed, or they can credit average by bringing up the grade of the passing semester to counteract the failing semester (Both semesters must average to a 70 or higher for the year)

Academic Options & GPA

- On-Level
- AAC (formerly Pre-AP) – Classes meant to prepare students for AP courses.
- AP (Advanced Placement) - Allows students to take college-level exams to earn college credit while in high school.
- Dual Credit - Allows high school students to simultaneously earn high school and college credit at the same time, Course Guide, Page 125.

Graduating Class of 2023 and beyond:

Advanced Placement (AP)/ Beyond AP Courses, Dual Credit Courses	AAC, Honors Courses	On Level Courses
Receives 10 point weight	Receive 5 point weight	Non-weighted

Example of a high school student's grades:

Physics (on level)	86 = 86 points
AP English III	94 = 104 points
US History Dual Credit	84 = 94 points
Athletics	100 = 100 points
Choir	100 = 100 points
AAC Pre-Calculus	86 = 91 points
Journalism	94 = 94 points

Total points = 669 points,
 divided by 7 = 95.5714286

Credit Requirements for Graduation

Foundation Graduation Program Overview

Foundation-Only 22 Credits*	Foundation + Endorsements – 26 Credits	Distinguished Level of Achievement – 26 Credits
<ul style="list-style-type: none"> • 4 credits English – ELA I, II, III, IV or one credit in any authorized advanced English course • 3 credits Mathematics – Algebra I, Geometry, one credit in any authorized advanced math course • 3 credits Science – Biology, IPC/ Chemistry/ Physics, and one credit in any authorized science course • 3 credits Social Studies –US History, Government, Economics, World Geography or World History • 2 credits World Language or Computer Science (level I and level II) • 1 credit Physical Education • 1 credit Fine Arts • .5 credit Health (FBISD) • .5 credit Speech (FBISD) • 4 credits in electives (may include CTE or certification courses) <p>* Students may opt to Foundation-only after completing sophomore year with parent and campus approval.</p>	<ul style="list-style-type: none"> • 4 credits English – ELA I, II, III, IV or one credit in any authorized advanced English course • 4 credits Mathematics – Algebra I, Geometry, two credits in any authorized advanced math course • 4 credits Science – Biology, IPC/ Chemistry/ Physics, and two credits in any authorized science course • 3 credits Social Studies – US History, Government, Economics, World Geography or World History • 2 credits World Language or Computer Science (level I and level II) • 1 credit Physical Education • 1 credit Fine Arts • .5 credit Health (FBISD) • .5 credit Speech (FBISD) • 6 credits in electives (may include CTE or certification courses) • Credit requirements specific to at least one endorsement 	<ul style="list-style-type: none"> • 4 credits English – ELA I, II, III, IV or one credit in any authorized advanced English course • 4 credits Mathematics – Algebra I, Geometry, Algebra II**, one credit in any authorized advanced math course • 4 credits Science – Biology, IPC/ Chemistry/ Physics, and two credits in any authorized science course • 3 credits Social Studies – US History, Government, Economics, World Geography or World History • 2 credits World Language or Computer Science (level I and level II) • 1 credit Physical Education • 1 credit Fine Arts • .5 credit Health (FBISD) • .5 credit Speech (FBISD) • 6 credits in electives (may include CTE or certification courses) • Credit requirements specific to a least one endorsement
<p>**While a student is not required by state law (Texas Education Code, Section 28.025) to successfully complete Algebra II as a requirement for high school graduation, a student may not earn the distinguished level of achievement or be eligible for automatic admission to a Texas public college or university if the student does not successfully complete high school Algebra II. In addition, many colleges and universities require Algebra II as an admission requirement even if the student is not in the top 10% of their class. For more information, please visit the FBISD website: https://www.fortbendisd.com/Page/984</p>		

Testing Requirements for Graduation

Students must pass the following assessments in order to graduate:

5 STAAR EOC Exams

- Algebra I
- Biology
- English I
- English II
- U.S. History

Retesting is available over the summer and in December.

Required Electives & Additional TEA Requirements for Graduation

- Speech
- Health
- PE (Dance, JROTC, Athletics, Band)
 - Foreign Language I
 - Foreign Language II
- Fine Art (Dance, Floral Design, Band, Orchestra, Choir, Art, Theatre)
- Additional TEA Requirements- Peace Officer, CPR, FAFSA/TAFSA

Endorsements

Endorsements, Programs and Pathways				
STEM	Business and Industry	Public Service	Arts and Humanities	Multidisciplinary-Studies
<ul style="list-style-type: none"> • Math • Science • STEM 	<ul style="list-style-type: none"> • Agriculture, Food, and Natural Resources • Architecture and Construction • Arts, Audio/Video Technology, and Communications • Business, Marketing, and Finance • Hospitality and Tourism • Information Technology • Manufacturing • Transportation, Distribution, and Logistics • English — Journalism and Debate 	<ul style="list-style-type: none"> • Education and Training • Health Science • Human Services • Junior Reserve Officers' Training Corps (JROTC) • Law and Public Service 	<ul style="list-style-type: none"> • Visual Art (drawing, painting, sculpture, ceramics, and digital art) • Music (band, orchestra, choir) • Theatre (theatre, technical theatre, and theatre production) • Dance • World Languages • Social Studies 	<ul style="list-style-type: none"> • 4x4 • Advanced Courses • AP/IB/Dual Credit

Endorsements ~ Multidisciplinary Studies

- Students may select a variety of electives to satisfy this endorsement
- Complete the 4x4
 - 4 Math Required Electives
 - 4 Science 5 Additional Electives
 - 4 Social Studies
 - 4 English
- 4 credits in AP or Dual Credit
- 4 advanced courses that prepare you for the workforce

Endorsements ~ STEM (Science, Technology, Engineering, Math)

Must take Algebra II, Chemistry and Physics for all

Endorsement Pathway Options and Electives				
STEM				
Pathway Option	First Year	Second Year	Third Year	Fourth Year
Engineering	CST190 Intro to Engineering Design	CST200 Engineering Science	CST220 Civil Engineering and Architecture	CST270 Engineering Design and Development
Programming and Software Dev	CST280 Fundamentals of Comp Sci	CST290 Comp Sci I	CST300 AP Comp Sci Principles	TA520 and TA521 AP Comp Sci A 2 CR
Math or Science	Students may earn a STEM endorsement by completing 5 credits in math or 5 credits in science. Algebra II, Chemistry, and Physics are required for ALL STEM endorsements.			

Endorsements ~

Business and Industry - CTE				
*Courses at Reese Career and Technical Center (*RCTC) require a completed Student Letter of Interest and acceptance into the program.				
Pathway Option	First Year	Second Year	Third Year	Fourth Year
Animal Science	CAG010 Prin of Ag, Food, & Nat Resources	CAG030 Small Animal Mgmt .5 AND CAG040 Equine Sci .5	CAG020 Livestock Production	CAG060 Adv. Animal Science OR CAG320 Vet Med Applications + Lab 2 CR (*RCTC)
Architectural Design	CAC010 Prin of Architecture	CAC070 Architectural Des I	CAC080 Architectural Des II 2 CR	CTE520 Career Prep I 2 CR (*RCTC)
Electrical			CAC020 Prin of Construction (*RCTC) AND CAC220 Electrical I (*RCTC)	CAC230 Electrical II 2 CR (*RCTC)
HVAC & Sheet Metal			CAC020 Prin of Construction AND CAC240 HVAC I (*RCTC)	CAC250 HVAC II 2 CR (*RCTC)
Digital Communications	CAT010 Prin of Arts, A/V Tech, & Communications	CAT090 Audio/Video Prod I + Lab 2 CR (*RCTC)	CAT110 Audio/Video Prod II + Lab 2 CR (*RCTC)	
Business Management	CBU010 Principles of Business, Marketing, and Finance	CBU030 Business Info Mgmt I	CBU100 Business Mgmt	CTE520 Career Prep I 2 CR (*RCTC)
Marketing and Sales	CBU010 Principles of Business, Marketing, and Finance	CBU030 Business Info Mgmt I	CMA040 Sports and Entertainment Marketing .5 CR AND CMA010 Advertising .5 CR	CTE520 Career Prep I 2 CR (*RCTC)
Culinary Arts		CHT030 Culinary Arts 2 CR (*RCTC)	CHT040 Advanced Culinary Arts 2 CR (*RCTC)	CHT050 Practicum in Culinary Arts 2 CR (*RCTC)
Networking Systems		CIT010 Principles of Info Tech AND CIT030 Computer Maint. + Lab 2 CR (*RCTC)	CIT050 Networking + Lab 2 CR (*RCTC)	
Welding			CMN020 Intro to Welding (*RCTC) AND CMN030 Welding I 2 CR (*RCTC)	CMN040 Welding II 2 CR (*RCTC)
Automotive		CTD090 Automotive Tech I 2 CR (*RCTC) OR CTD095 Automotive Tech I DC 2 CR (*RCTC)	CTD100 Automotive Tech II 2 CR (*RCTC) OR CTD105 Automotive Tech II DC 2 CR (*RCTC)	CTD210 Practicum in Transportation Systems 2 CR (*RCTC)
Diesel and Heavy Equip		CTD170 Diesel Equip Tech I 2 CR (*RCTC)	CTD180 Diesel Equip Tech II 2CR (*RCTC)	CTD210 Practicum in Transportation Systems 2 CR (*RCTC)

Industry level certifications available

(RCTC- Reese Center Application Required with prerequisites)

Course Guide, Page 18

-Ag, Food, and Natural Resources-

Floral Design



Endorsements ~



~Ag, Food, and Natural Resources~



Injection Lab



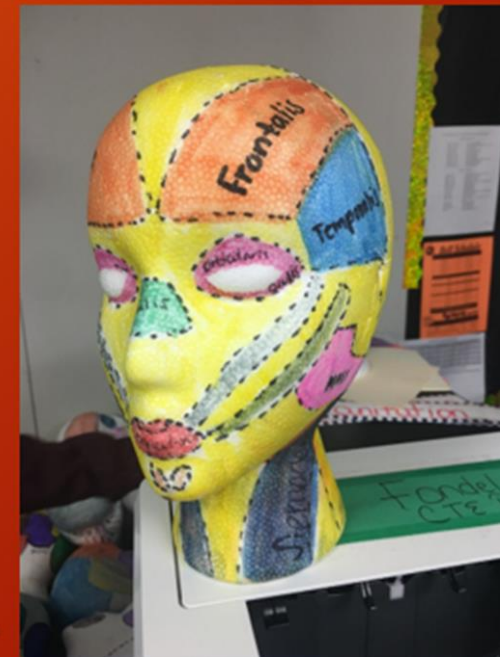
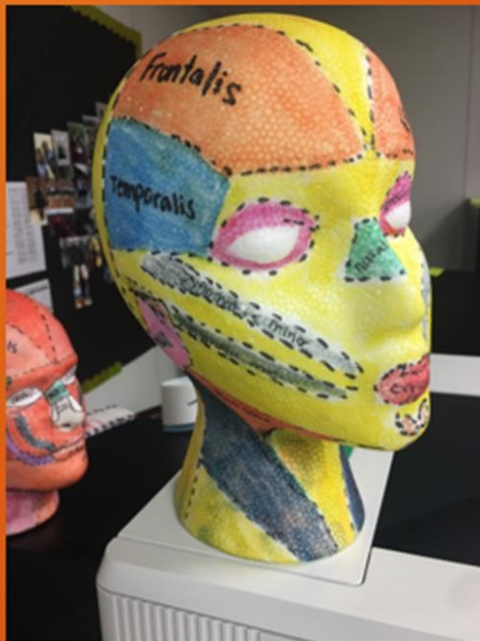
Endorsements ~

Business and Industry - English				
Pathway Option	First Year	Second Year	Third Year	Fourth Year
Journalism/ Yearbook	EP113 Photojournalism OR EJ113 Journalism	EY112 Yearbook Prod. I	EY122 Yearbook Prod. II	EY132 Yearbook Prod. III OR EJ142 Independent Study in Journ
Journalism/ Newspaper		EN112 Newspaper I	EN122 Newspaper II	EN132 Newspaper III OR EJ142 Independent Study in Journ
Journalism/ Broadcast		EB112 Broadcast I	EB122 Broadcast II	EB132 Broadcast III OR EJ142 Independent Study in Journ
English/Debate	ED112 Debate I	ED122 Debate II	ED132 Debate III	(English IV completes this pathway.)

Endorsements ~

Public Service				
*Courses at Reese Career and Technical Center (*RCTC) require a completed Student Letter of Interest and acceptance into the program.				
Pathway Option	First Year	Second Year	Third Year	Fourth Year
Teaching and Training	CET010 Principles of Education and Training	CET020 Human Growth and Development	CET030 Instructional Practices 2 CR (*RCTC)	CET040 Practicum in Education and Training 2 CR (*RCTC)
Healthcare Therapeutic	CHS010 Principles of Health Sci	CHS020 Medical Terminology	CHS070 Anatomy & Phys CHS030 Health Science Theory	CHS050 Practicum in Health Sci 2 CR (*RCTC)
Cosmetology			CHU110 Principles of Cosm. Design & Color Theory (*RCTC) AND CHU130 Cosmetology I 2 CR (*RCTC)	CHU140 Cosmetology II 2 CR (*RCTC)
Family and Community Services	CHU010 Principles of Human Services	CET020 Human Growth and Development	CHU050 Counseling and Mental Health	CHU080 Family and Community Services
JROTC	RO111 JROTC I	RO121 JROTC II	RO132 JROTC III	RO142 JROTC IV
Emergency Services	CLP010 Principles of Law, Public Safety, Corrections, and Security	CLP130 Disaster Response	CLP140 EMT Basic 2 CR (*RCTC) AND CHS07R Anatomy & Phys (*RCTC)	CLP110 Practicum in Law, Public Safety, Corrections, and Security 2 CR (*RCTC)
Law Enforcement	CLP010 Principles of Law, Public Safety, Corrections, and Security	CLP020 Law Enforcement I	CLP050 Criminal Investigation	CLP030 Law Enforcement II

~Health Science Pathway~ Principles of Health Science



Mannequin head with muscles correlating to facial expression and bone movement

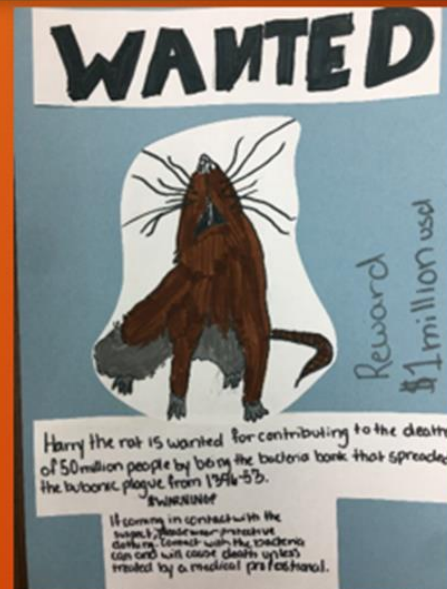
~Health Science Pathway~
Principles of Health Science

Myth Graveyard



~Health Science Pathway~

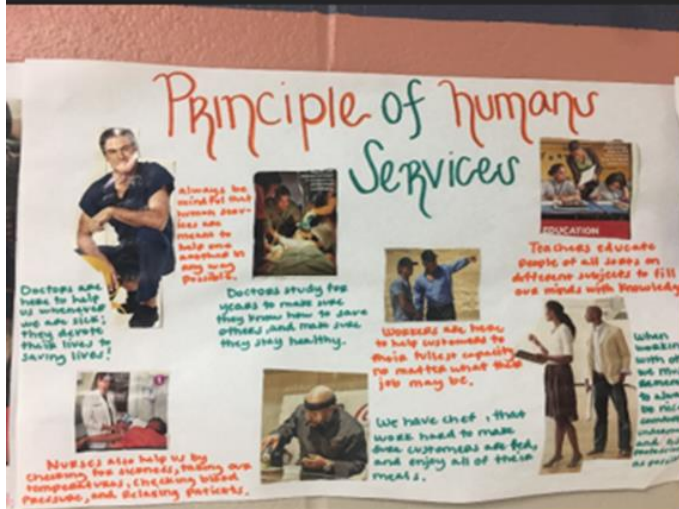
Medical Terminology and Health Science Theory



Disease "Wanted Posters"

~Human Services Pathway~

Principles of Human Services and Family and Community Services



Helping Professions



Endorsements ~

~JROTC~



Endorsements ~

Arts and Humanities				
Pathway Option	First Year	Second Year	Third Year	Fourth Year
Drawing	FA013 Art I	FA121 ART II - Drawing 1	FA132 ART III - Drawing 2	FA142 ART IV - Drawing 3 OR FA811 AP Drawing Portfolio
Painting		FA223 ART II - Painting 1	FA232 ART III - Painting 2	FA242 ART IV - Painting 3 OR FA611AP 2D Design Portfolio
Ceramics		FA323 ART II - Ceramics 1	FA332 ART III - Ceramic 2	FA342 ART IV - Ceramics 3 OR FA711AP 3D Design Portfolio
Sculpture		FA423 ART II - Sculpture 1	FA432 ART II - Sculpture 2	FA442 ART IV - Sculpture 3 OR FA711AP 3D Design Portfolio
Digital Art & Media		FA623 ART II - Digital Art & Media 1	FA624 ART III - Digital Art & Media 2	FA625 ART IV - Digital Art & Media 3 OR FA611AP 2D Design Portfolio
Band	FB113 Band 1	FB123 Band 2	FB133 Band 3	FB143 Band 4
Orchestra	FO212 Orch 1	FO222 Orch 2	FO232 Orch 3	FO242 Orch 4
Color Guard	FG113 Color Guard 1	FG123 Color Guard 2	FG133 Color Guard 3	FG143 Color Guard 4
Choir	FC212 Choral Music 1	FC222 Choral Music 2	FC232 Choral Music 3	FC242 Choral Music 4
Piano Tech	FP113 Piano Tech I	FP123 Piano Tech II	FP132 Piano Tech III	FB 142 Piano Tech IV
Mariachi	FM512 Mariachi I	FM522 Mariachi II	FM532 Mariachi III	FM542 Mariachi IV
Theater	FT113 Theatre I	FT123 Theater II	FT132 Theater III	FT142 Theater IV
Technical Theater	FT223 Tech Theater I	FT232 Tech Theater II	FT242 Tech Theater III	FT244 Tech Theater IV
Theater Production	FT323 Theater Prod I	FT332 Theater Prod II	FT342 Theater Prod III	FT344 Theater Prod IV
Dance	FD113 PrinofDance 1	FD123 PrinofDance 2	FD133 PrinofDance 3	FD143 PrinofDance 4
Dance Team (audition req)	FD113 PrinofDance 1 OR FD212 DanceTeam 1	FD222 DanceTeam 2	FD232 DanceTeam 3	FD242 DanceTeam 4
World Language	Students may take 4 years of the same language or 2 years of lang. 1 and 2 years of lang. 2. See World Language Section for Options.			
Social Studies	Students may take 5 credits of Social Studies to earn this endorsement. Credits <u>must</u> include W. Geo or W. Hist, US Hist, and Gov/Eco. Two additional credits may be selected from:			
	SS532 Persand FinLiteracy	SS5121/5122 Psychology	SS4351/4352 AP Human Geo	SS922P Texas Government Dual Credit
	SS5221/5222 Sociology	SS5111/5112 AP Psych	SS591 AP European Hist	
	SS523 Sociology DC	SS513 Psych DC		
	SS931 Ethnic Studies: Mexican American Studies		SS932 Ethnic Studies: African American Studies	

Course Guide, starts on page 54



Performance Acknowledgements

A student may earn a performance acknowledgement for:

- In a Dual Credit course
- In Bilingualism/Biliteracy
- On an AP test or IB exam
- On the PSAT, the ACT-Plan, the SAT or the ACT
- Earning a nationally or internationally recognized business or industry certification or license



Distinguished Level of Achievement*

- 4 credits in Math (Algebra 2)
- 4 credits in Science
- Curriculum requirements for Foundation & at least 1 Endorsement area

*Mandatory to be eligible for top 10% Automatic Admission



Endorsements

- STEM
- Business & Industry
- Arts & Humanities
- Public Services
- Multidisciplinary



Foundation Graduation Program

- | | |
|-----------|--------------------|
| 4 credits | ELA |
| 3 credits | Mathematics |
| 3 credits | Science |
| 3 credits | Social Studies |
| 2 credits | LOTE |
| 1 credits | Fine Art |
| 1 credits | Physical Education |
| 5 credits | Electives |

A photograph of eight light-colored wooden blocks arranged in a row on a wooden surface. Each block has a single lowercase letter printed on it in a bold, black, sans-serif font. The letters, from left to right, are 't', 'h', 'a', 'n', 'k', 'y', 'o', and 'u'. The background is a soft-focus bokeh of warm, golden-yellow lights, creating a warm and appreciative atmosphere.

thank you